

SPALDING 2009 CANCER CENTER

**2009 Annual Report of the Oncology
Program with 2008 Data**

Spalding Regional Medical Center



Introduction of Oncology Committee

The Oncology Committee at Spalding Regional Medical Center oversees the care of patients in our community that have been diagnosed with a malignancy. In addition to setting goals for improvement, the committee supervises the Cancer Registry, performs chart review, develops Tumor Conference presentations, and is available for consultation.

During 2008, members of this committee planned and participated in the local American Cancer Society Relay for Life event, prostate and breast screening programs, and several patient care evaluations.

Our data was also submitted to the Georgia Center for Cancer Statistics, ONCOPOOL, and the National Cancer Data Base. We are pleased to offer the summary for 2008.

Committee Members:

Dr. Fogle	Mac Hosn
Dr. Medberry	Cheryl Ivey
Dr. Morehead	Renia Lott
Dr. Rodgers	Latisha Mckenzie
Dr. Vasquez	Marci Moore
Michelle Blose (American Cancer Society)	Angela Morey
Terry Doyle	Tracy Ortiz
Cynthia Flemister	Elizabeth Pool
Amanda Foster	Tamatha Rutherford
Nancy Franklin	Liz Tarleton
Julie Holdsworth	Ryran Traylor
Melony Hosford	Emmie Smith

Education, Prevention and Detection

Spalding Regional Medical Center supports patient and family education as well as community education

in an effort to reduce the risks of cancer, promote early detection and improve quality of life. In addition, a cancer support group is available to patients, family members, and caregivers. A multidisciplinary team actively supports patient and family education by facilitating the development of diagnosis and procedure specific instructional resources such as lesson plans, handouts, and videos. The team has established educational discharge criteria for patients in order to improve their ability to care for themselves and reduce the risks of complications.

The approved printed instructional materials are readily accessible to the staff in each patient care area by computer. Approved video libraries are also available in each area. These core curricula of basic information help to ensure consistency and continuity despite the location of the patient. Enhanced instruction by Oncology Certified Nurses and Registered Dietitians is provided by consult on an inpatient and outpatient basis.

Community programs were sponsored during 2008 to raise awareness of the value of prevention and early detection.

These activities included:

- Participation in American Cancer Society programs including the Relay for Life, Prostate Screening, and Breast Cancer Awareness month and the Colon Cancer Screening and Awareness.
- Breast Cancer Community Outreach to increase awareness and provide self-exam instruction and education. During each presentation participants learned about risk factors associated with breast cancer and methods of early detection.
- Mammo party screening.
- Partnering with local business and industry to promote employee wellness.
- Monthly educational programs for physicians and nurses discussing case studies and new developments.
- Sponsoring community education events on cancer prevention and screenings.
- Community billboards, newspaper advertisements and quarterly community newsletters promoted early detection of breast cancer, mammogram screenings, and community education regarding the importance of self-breast exam and early detection of breast cancer.



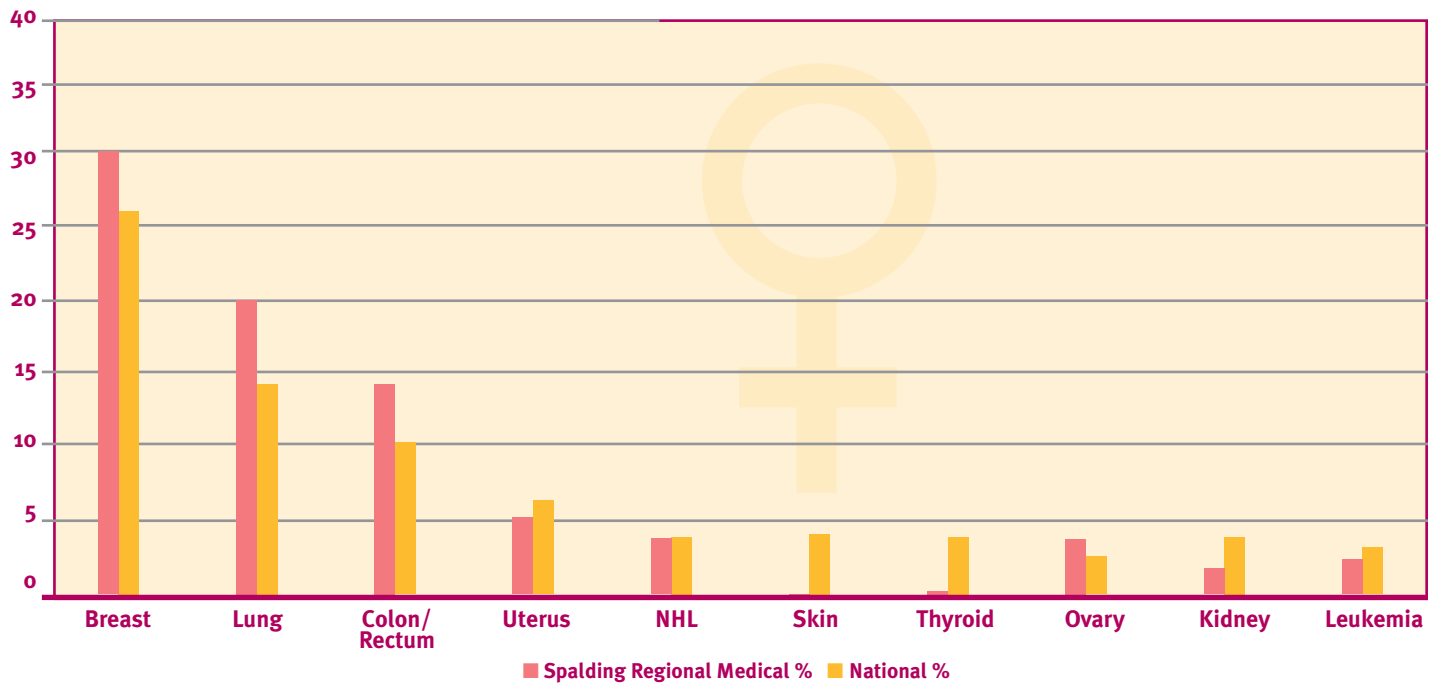
Cancer Registry Report

Spalding Regional Medical Center maintains a Cancer Registry, which has data on patients diagnosed or treated for a malignancy at the facility since January 1, 1993, and has more than 4300 cases currently in the database.

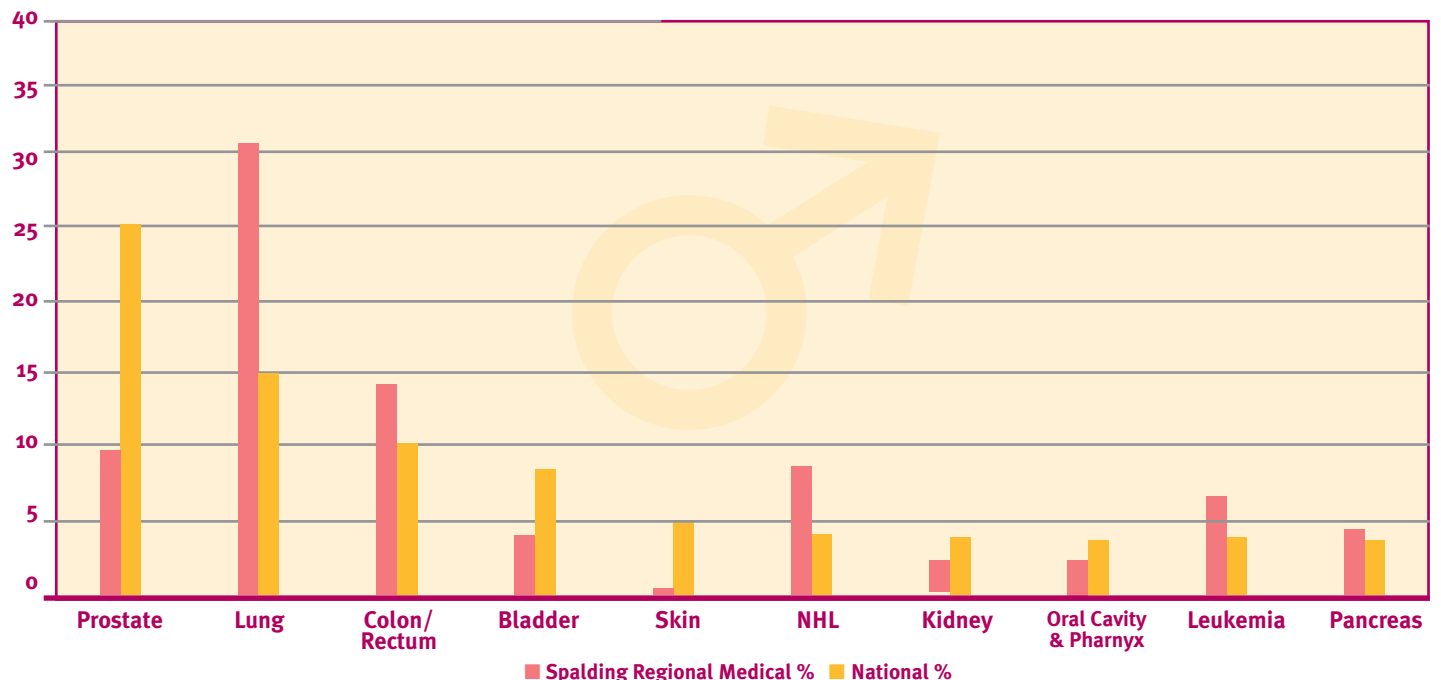
These patients are followed for the remainder of their lives to ensure adequate follow up and to assist with our planning in providing the best care available in the area.

During 2008, 248 new cases (121 males and 127 female) were added to the database. The following tables reflect many details of the patients and their diagnosis and care.

Female AMERICAN CANCER SOCIETY CANCER FACTS AND FIGURES ESTIMATED NEW CASES 2008 (%)



Male AMERICAN CANCER SOCIETY CANCER FACTS AND FIGURES ESTIMATED NEW CASES 2008 (%)

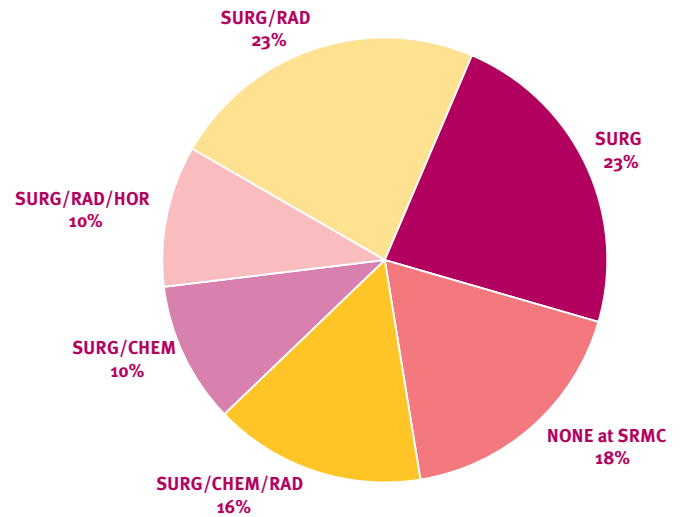


2008 Patients by County

County	# of Patients
BIBB	1
BUTTS	33
CLAYTON	5
COWETA	1
DODGE	1
FAYETTE	6
HENRY	8
LEE	30
LAURENS	1
MERIWETHER	2
MONROE	4
PEACH	1
PIKE	28
SPALDING	191
UPSON	14
OUT OF STATE	1

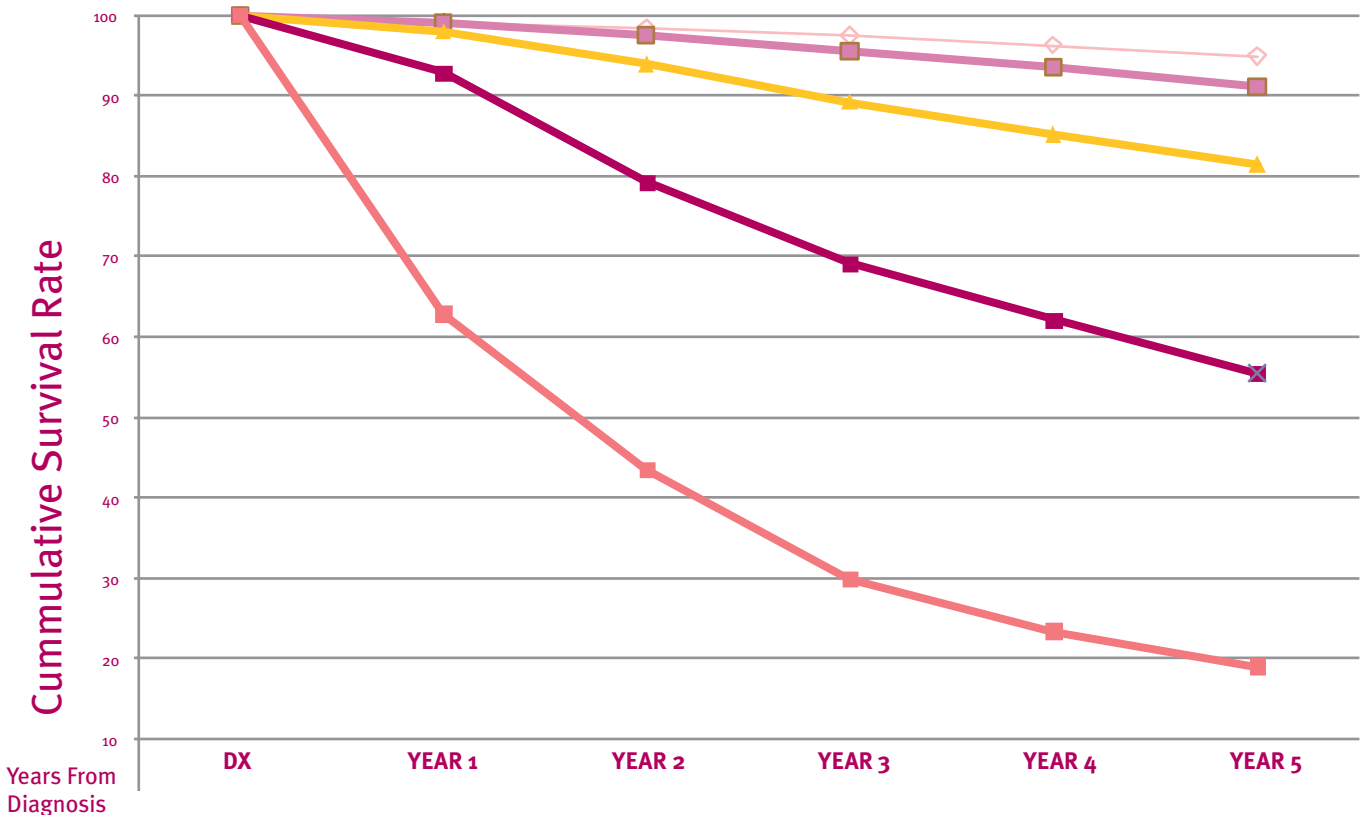
Breast Cancer Incidence at Spalding Regional Medical Center

2008 Breast Cancer - All Rx



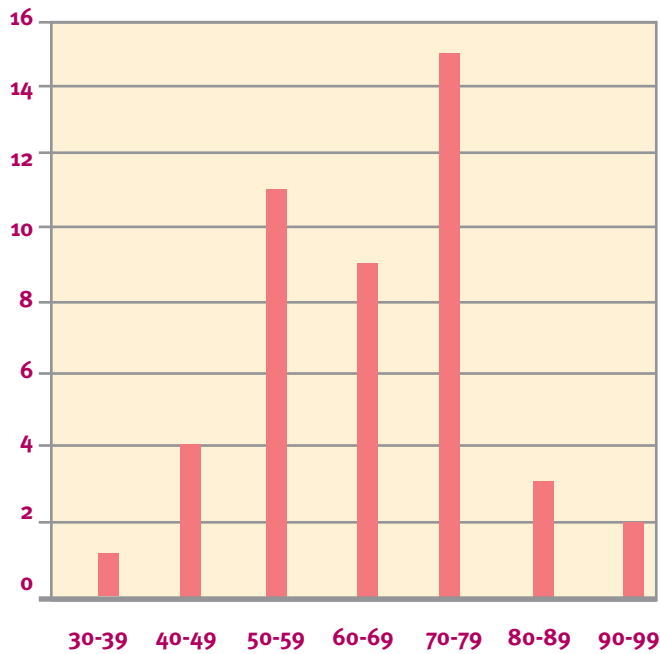
Observed Survival For Cases Diagnosed in 1998 - 2002

Data from 114 Facilities [GA]

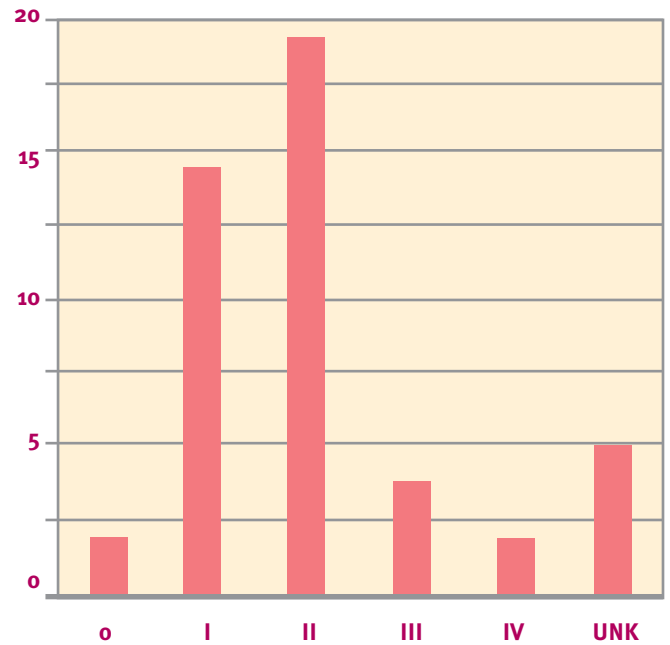


The age and gender breakdown of breast cancer for 2008 is shown below.

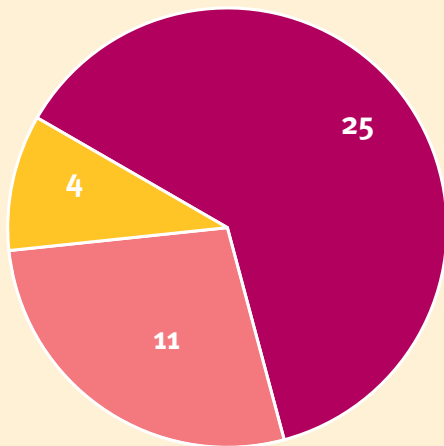
2008 Female Breast Cancer – Age of Diagnosis



2008 Breast Cancer by Stage

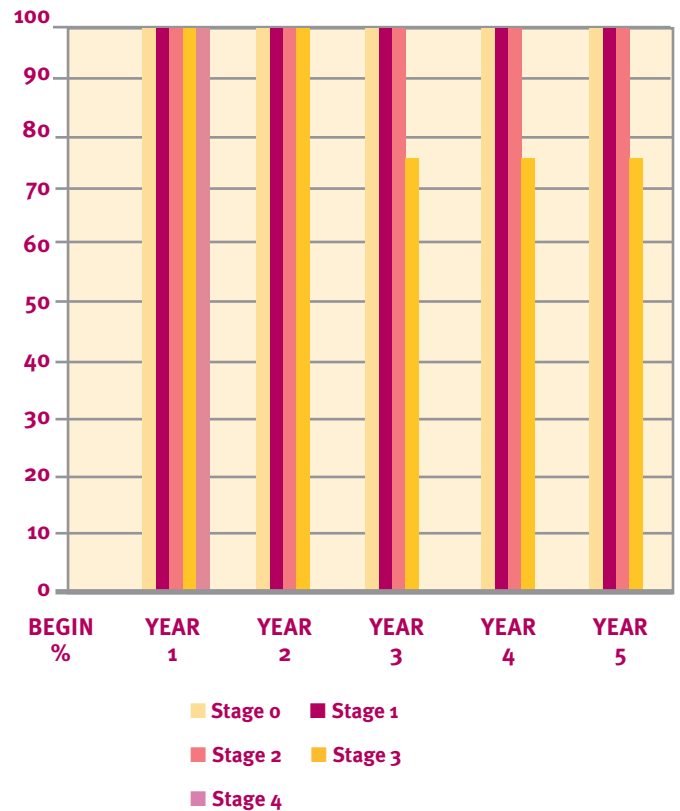


2008 Breast Cancer Surgeries



- Total Mastectomy
- Radical Mastectomy
- Lumpectomy

Breast Cancer at SRMC - 5 Year relative Survival by Stage



Oncology Program Services

- 160 ACUTE MEDICAL/ SURGICAL BEDS
- MONTHLY MULTI-DISCIPLINARY CANCER COMMITTEE MEETINGS
- COMPUTERIZED CANCER REGISTRY
- ACCREDITED BY THE JOINT COMMISSION ON ACCREDITATION OF HEALTHCARE ORGANIZATIONS
- AMERICAN COLLEGE OF RADIOLOGY ACCREDITED MAMMOGRAPHY SERVICES
- BOARD-CERTIFIED PHYSICIAN ONCOLOGY SPECIALISTS
Medical Oncologists
Radiation Oncologists
Specialists in: Pathology,
Urology
General Surgery
Radiology
- OTHER ONCOLOGY SPECIALISTS
Oncology Certified Nurses
Certified Tumor Registrar
Bone Marrow Transplant
Referrals
- Clinical Trial Participation and Referrals
- CLINICAL EDUCATION CONFERENCES
Monthly Tumor Conferences
- PATIENT SUPPORT SERVICES
Individual Patient Teaching
- PULMONARY SERVICES
Basal Metabolic Rate (Indirect Caloric Expenditure)
Freedom from Smoking
Pulmonary Function Studies
Blood Gas Analysis
Bronchial Hygiene
Oxygen Therapy
- REHABILITATION AND ANCILLARY SERVICES
Wound Care
Occupational Therapy
Lymphedema Management
Physical Therapy
Speech Therapy
Swallow Therapy
Enterostomal Care
- LABORATORY
Carcinoembryonic Antigen
CA 125, CA 15-3, CA 19-9
Prostate Specific Antigen and Other Tumor Markers
DNA Probes
Immunochemoluminescence
Surgical Pathology
- Cytology
Automated Hematology/
Coagulation, Microbiology,
Parasitology,
Mycobacteriology
Blood Bank Transfusion
Service, Including
Therapeutic Phlebotomy
Automated Blood Chemistry
Analysis
Automated Electrophoresis
Radioimmunoassays
Virology Testing
Toxicology
Immunocytochemistry
Therapeutic Drug Monitoring
- PHARMACY
Laminar Flow Biological
Safety For Preparation Of
Chemotherapy Agents
Pharmacokinetic Drug
Monitoring
Patient Controlled Analgesic
Program
Pharmacist Consultation and
Monitoring
Medication Counseling Service
Total Parenteral Nutrition
Monitoring Service
Pharmacist Run Anti-
Coagulation Clinic
- DIAGNOSTIC IMAGING
Mammography
Angiography
- Ultrasonography
Magnetic Resonance Imaging
Nuclear Medicine
Spiral Computerized
Tomographic Scanning
Imaging Directed Biopsies
Interventional Radiologic
Techniques For Relief
Of Biliary and Urological
Obstruction
Localization and Drainage Of
Neoplastic and/or Infected
Fluid Collections
- DAY SURGERY FACILITIES
Bone Marrow Biopsies
Brachytherapy
High Dose Brachytherapy
Paracentesis, Thoracentesis
Incisional and Excisional
Biopsies
Outpatient Chemotherapy
Major and Minor Procedures
Fine Needle Aspirations
- RADIATION SERVICES AVAILABLE THROUGH GRIFFIN REGIONAL RADIATION THERAPY CENTER

Tumor Conference Dates and Discussions

2/5/2008	Lung, Colon, Breast	8/5/2008	Breast, Lung, Tongue
3/4/2008	Colon, Breast, Breast Markers	9/2/2008	Femur, Colon, Pancreas, Stomach
3/18/2008	Lung, Ovary, Lymphoma	10/7/2008	Colon, Breast, Cervix, Lung
4/15/2008	Breast, Lung, Colon	11/4/2008	Lung, Colon, Breast, Cervix
5/6/2008	Breast, Ovary, Small Bowel	12/16/2008	Vocal Cord, Breast, Stomach
6/3/2008	Cervix, Colon, Ajcc Staging		
7/1/2008	Ovary, Lung, Breast, Bladder		