

SPALDING CANCER CENTER

**2008 Annual Report of the Oncology
Program with 2007 Data**

Spalding Regional Medical Center



Introduction of Oncology Committee

The Oncology Committee at Spalding Regional Medical Center oversees the care of patients in our community that have been diagnosed with a malignancy. In addition to setting goals for improvement, the committee supervises the Cancer Registry, performs chart review, develops Tumor Conference presentations, and is available for consultation.

During 2007, members of this committee planned and participated in the local American Cancer Society Relay for Life event, prostate and breast screening programs, and several patient care evaluations.

Our data was also submitted to the Georgia Center for Cancer Statistics, ONCOPOOL, and the National Cancer Data Base. We are pleased to offer the summary for 2007.

Committee Members:

Dr. Rodgers

Dr. Fogle

Dr. Vasquez

Dr. Morehead

Dr. Medberry

Cheryl Ivey

Mac Hosn

Nancy Franklin

Elizabeth Pool

Liz Tarleton

Angela Morey

Tamatha Rutherford

Terry Doyle

Renia Lott

Julie Holdsworth

Education, Prevention and Detection

Spalding Regional Medical Center supports patient and family education as well as community education

in an effort to reduce the risks of cancer, promote early detection and improve quality of life. In addition, a cancer support group is available to patients, family members, and caregivers. A multidisciplinary team actively supports patient and family education by facilitating the development of diagnosis and procedure specific instructional resources such as lesson plans, handouts, and videos. The team has established educational discharge criteria for patients in order to improve their ability to care for themselves and reduce the risks of complications.

The approved printed instructional materials are readily accessible to the staff in each patient care area by computer. Approved video libraries are also available in each area. These core curricula of basic information help to ensure consistency and continuity despite the location of the patient. Enhanced instruction by Oncology Certified Nurses and Registered Dietitians is provided by consult on an inpatient and outpatient basis.

Community programs were sponsored during 2007 to raise awareness of the value of prevention and early detection.

These activities included:

- Participation in American Cancer Society programs including the Relay for Life, Prostate Screening, and Breast Cancer Awareness month and the Great American Smokeout.

- Breast Cancer Community Outreach to increase awareness and provide self-exam instruction and education. During each presentation participants learned about risk factors associated with breast cancer and methods of early detection. Participants received educational literature, pink ribbon self-exam reminder stickers to place on calendars, and materials to make wooden bead necklaces. The necklaces were made during the presentation and represented the graduated size of lumps that may be found during breast self-exam, clinical exam, and mammogram. The necklaces, when worn, provide ongoing education to our community as participants explain the purpose of the beads.
- Partnering with local business and industry to promote employee wellness.
- Monthly educational programs for physicians and nurses discussing case studies and new developments.
- Sponsoring community education events on cancer prevention and screenings.
- Community billboards, newspaper advertisements and quarterly community newsletters promoted early detection of breast cancer, mammogram screenings, and community education regarding the importance of self breast exam and early detection of breast cancer.



Cancer Registry Report

Spalding Regional Medical Center maintains a Cancer Registry, which has data on patients diagnosed or treated for a malignancy at the facility since January 1, 1993, and has more than 4300 cases currently in the database.

These patients are followed for the remainder of their lives to ensure adequate follow up and to assist with our planning in providing the best care available in the area.

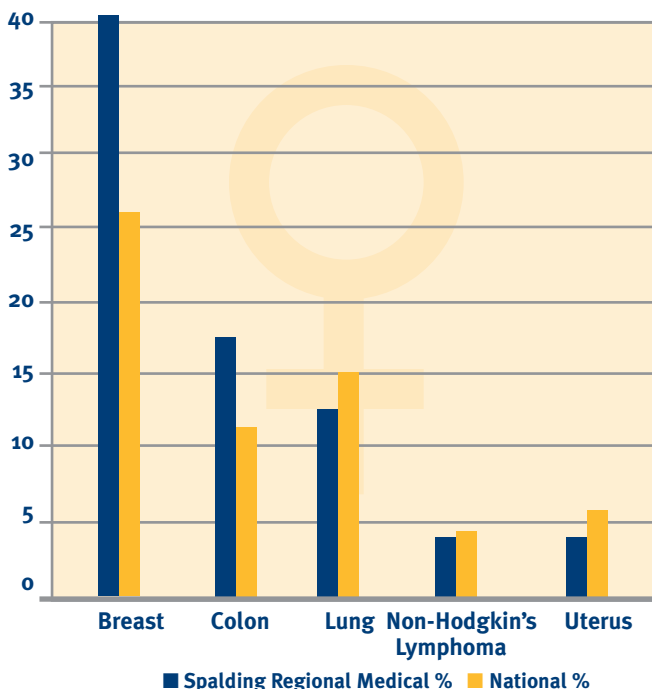
During 2007, 248 new cases (121 males and 127 female) were added to the database. The following tables reflect many details of the patients and their diagnosis and care.

2007 Patients by County

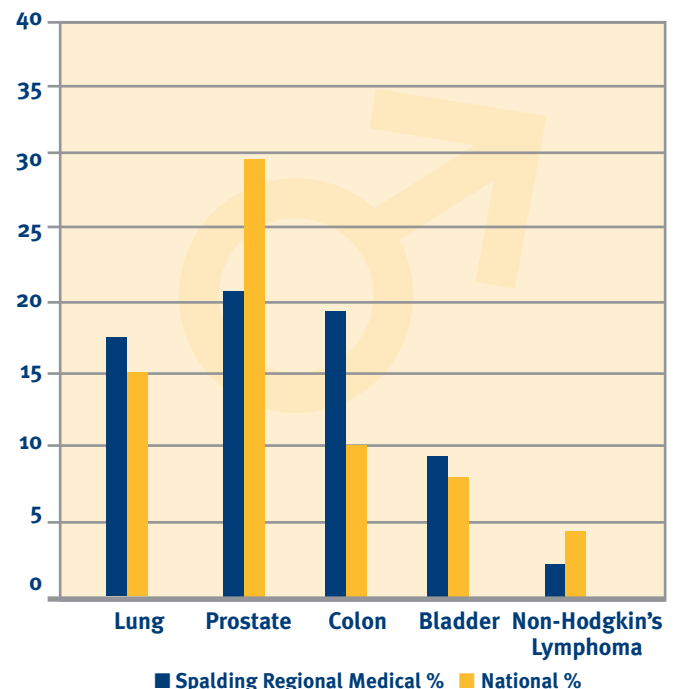
2007 Top 10 Primary Sites	# Male	# Female
Breast	0	53
Colon	17	20
Bronchus & Lung	21	16
Prostate	25	0
Bladder	12	2
Blood & Bone Marrow	5	4
Lymph Nodes	3	5
Stomach	6	0
Kidneys	4	2
Pancreas	3	2

County	# of Patients
BUTTS	38
FAYETTE	4
FULTON	1
HENRY	16
JASPER	2
LAMAR	29
MONROE	5
PIKE	17
SPALDING	146
UPSON	13

Female Top 5 Incidence Compared to American Cancer Society Projections, 2007 (%)



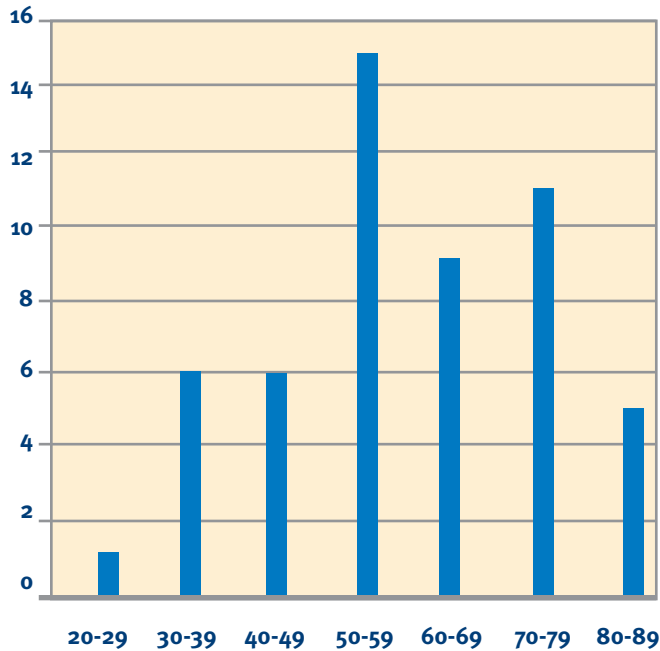
Male Top 5 Incidence Compared to American Cancer Society Projections, 2007 (%)



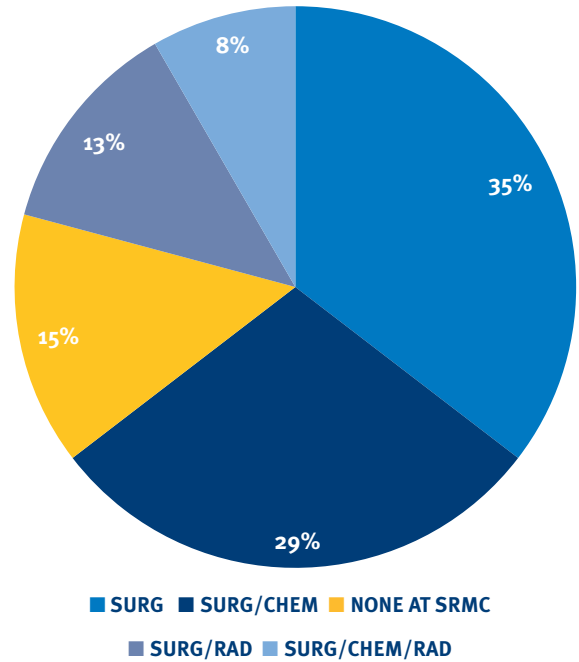
Breast Cancer Incidence at Spalding Regional Medical Center

The age and gender breakdown of breast cancer for 2007 is shown below.

2007 Breast Cancer – Age of Diagnosis

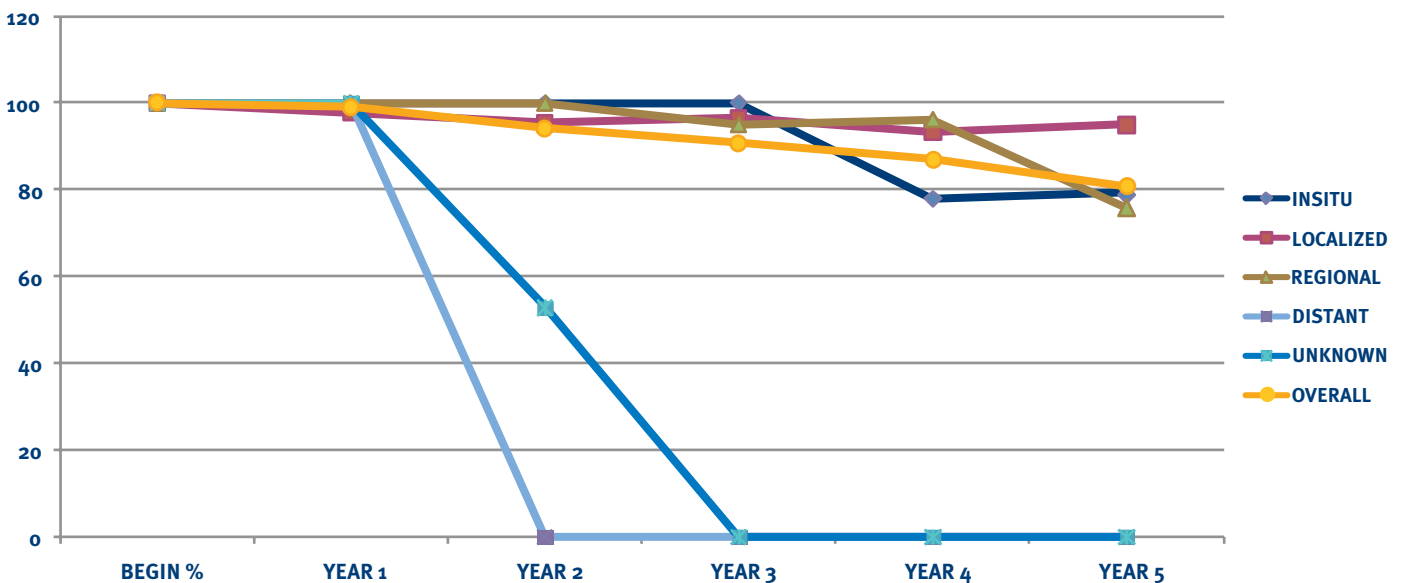


2007 Breast Cancer Treatment

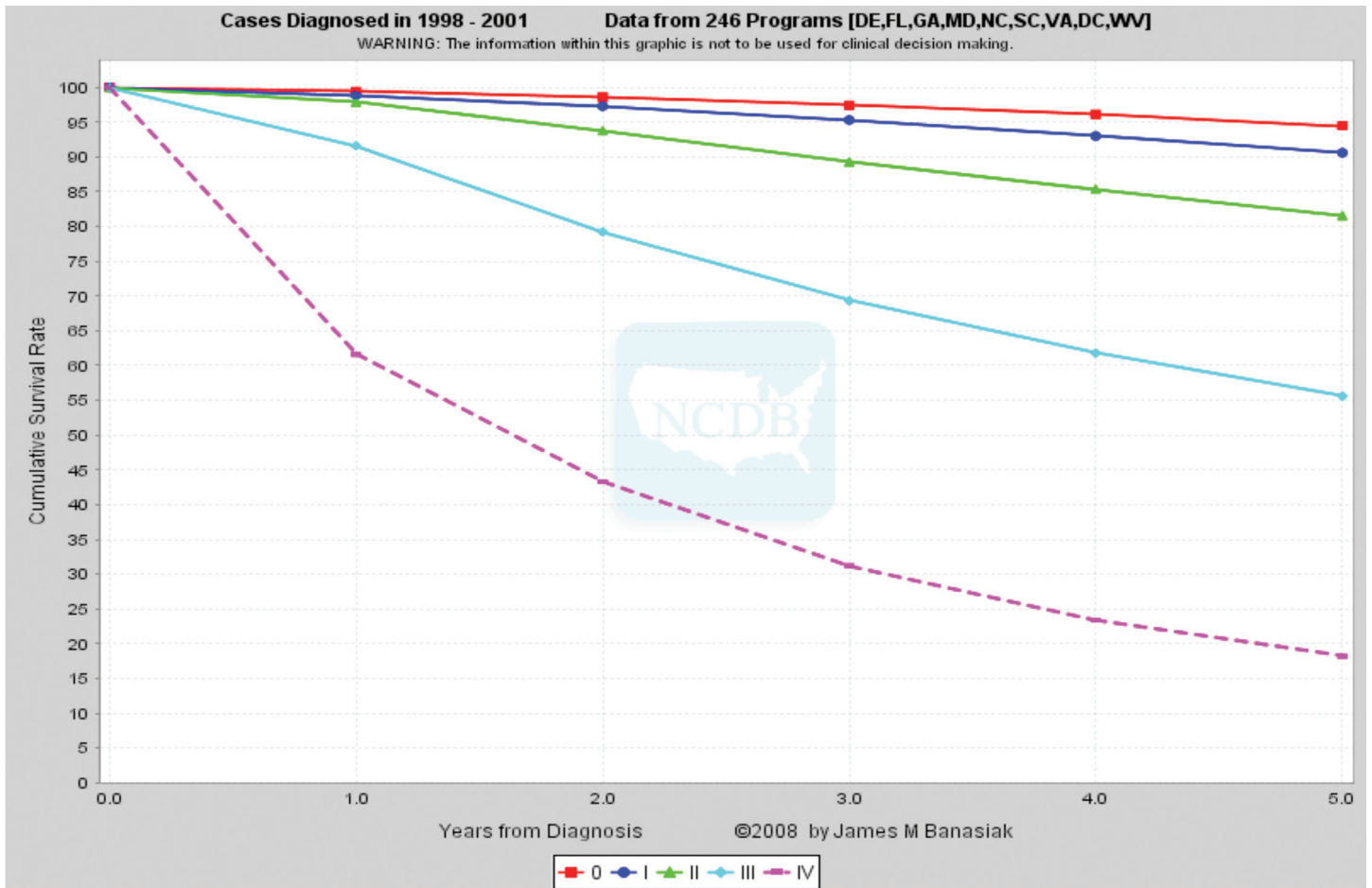


The five-year relative survival according to the American Cancer Society for all stages is 80.8%.

5-Year Relative Survival Rate by Stage of Disease



Observed Survival for Breast



Source: National Cancer Database Benchmark Survival Data

Oncology Program Services

- 160 ACUTE MEDICAL/ SURGICAL BEDS
- MONTHLY MULTI-DISCIPLINARY CANCER COMMITTEE MEETINGS
- COMPUTERIZED CANCER REGISTRY
- ACCREDITED BY THE JOINT COMMISSION ON ACCREDITATION OF HEALTHCARE ORGANIZATIONS
- AMERICAN COLLEGE OF RADIOLOGY ACCREDITED MAMMOGRAPHY SERVICES
- BOARD-CERTIFIED PHYSICIAN ONCOLOGY SPECIALISTS
Medical Oncologists
Radiation Oncologists
Specialists in: Pathology,
Urology
General Surgery
Radiology
- OTHER ONCOLOGY SPECIALISTS
Oncology Certified Nurses
Certified Tumor Registrar
Bone Marrow Transplant Referrals
- Clinical Trial Participation and Referrals
- CLINICAL EDUCATION CONFERENCES
Monthly Tumor Conferences
- PATIENT SUPPORT SERVICES
Individual Patient Teaching
- PULMONARY SERVICES
Basal Metabolic Rate (Indirect Caloric Expenditure)
Freedom from Smoking
Pulmonary Function Studies
Blood Gas Analysis
Bronchial Hygiene
Oxygen Therapy
- REHABILITATION AND ANCILLARY SERVICES
Wound Care
Occupational Therapy
Lymphedema Management
Physical Therapy
Speech Therapy
Swallow Therapy
Enterostomal Care
- LABORATORY
Carcinoembryonic Antigen CA 125, CA 15-3, CA 19-9
Prostate Specific Antigen and Other Tumor Markers
DNA Probes
Immunochemoluminescence
Surgical Pathology
- Cytology
Automated Hematology/
Coagulation, Microbiology,
Parasitology,
Mycobacteriology
Blood Bank Transfusion Service, Including
Therapeutic Phlebotomy
Automated Blood Chemistry Analysis
Automated Electrophoresis
Radioimmunoassays
Virology Testing
Toxicology
Immunocytochemistry
Therapeutic Drug Monitoring
- PHARMACY
Laminar Flow Biological Safety For Preparation Of
Chemotherapy Agents
Pharmacokinetic Drug Monitoring
Patient Controlled Analgesic Program
Pharmacist Consultation and Monitoring
Medication Counseling Service
Total Parenteral Nutrition Monitoring Service
Pharmacist Run Anti-Coagulation Clinic
- DIAGNOSTIC IMAGING
Mammography
Angiography
- Ultrasonography
Magnetic Resonance Imaging
Nuclear Medicine
Spiral Computerized Tomographic Scanning
Imaging Directed Biopsies
Interventional Radiologic Techniques For Relief Of Biliary and Urological Obstruction
Localization and Drainage Of Neoplastic and/or Infected Fluid Collections
- DAY SURGERY FACILITIES
Bone Marrow Biopsies
Brachytherapy
High Dose Brachytherapy
Paracentesis, Thoracentesis
Incisional and Excisional Biopsies
Outpatient Chemotherapy
Major and Minor Procedures
Fine Needle Aspirations
- RADIATION SERVICES AVAILABLE THROUGH GRIFFIN REGIONAL RADIATION THERAPY CENTER

Tumor Conference Dates and Discussions

Jan. 9, 2007	Bladder, Anus, Unknown Primary, Cervix	August 21, 2007	Lymphoma, Autopsy Findings
Feb. 6, 2007	Kidney, Rectum, Breast, Cervix	Sept. 4, 2007	Colon, Breast, Lung, Prostate, Cervix
Mar. 6, 2007	Pancreas, Colon, Cervix, Breast	October 2, 2007	Pelvic, Lung, Multiple Myeloma
April 3, 2007	Cervix, Vagina, Prostate, Colon	November 6, 2007	Breast, Head, Neck, Rectum
May 1, 2007	Breast, Cervix	December 4, 2007	Lung, Rectum, Breast
June 5, 2007	Gastric, Colon, Breast		
August 7, 2007	Breast, Lung, Colon, Prostate		